



MS and PhD Production (FY13-FY22)

All data are based solely on AFIT/EN.

Authorized

The number of authorized new quota students that are allocated for the FY, based on AFERB numbers in AUREPM. This number may include students who do not enroll in AFIT/EN (e.g., due to cancellations, switches to CI).

Enrolled

Counts of all MS, PhD, or non-degree (master's-level) enrolled students during the fall quarter, including:

- Quota and non-quota students
- New and continuing students
- Air Force and non-Air Force students

Students are counted once for each level (PhD vs. master's) in which they are enrolled. If a student is enrolled in programs at two levels, the student is counted once for each level.

of Degrees

Counts of all degrees awarded at the MS or PhD level during the entire FY (fall through summer). Enlisted/Officer breakdowns includes enlisted/officers in sister services (e.g., Navy Officers).

Data Source: AFIT/ENWI, Office of Institutional Research, and AFIT/ENE, Registration and Student Operations





Graduate School (AFIT/EN) MS & PhD Production FY13-22



Production - MS

Year (FY)	Authorized	Enrolled	# of Degrees Awarded	# of Civ	# of Officer	# of Enlisted
FY22	201	684	347	39	300	8
FY21	203	649	294	29	259	6
FY20	206	712	285	27	253	5
FY19	252	608	254	21	230	3
FY18	367	630	294	23	268	3
FY17	246	658	309	28	278	3
FY16	292	649	297	28	266	3
FY15	223	570	269	22	242	3
FY14	204	581	295	20	260	5
FY13	201	582	244	27	212	5

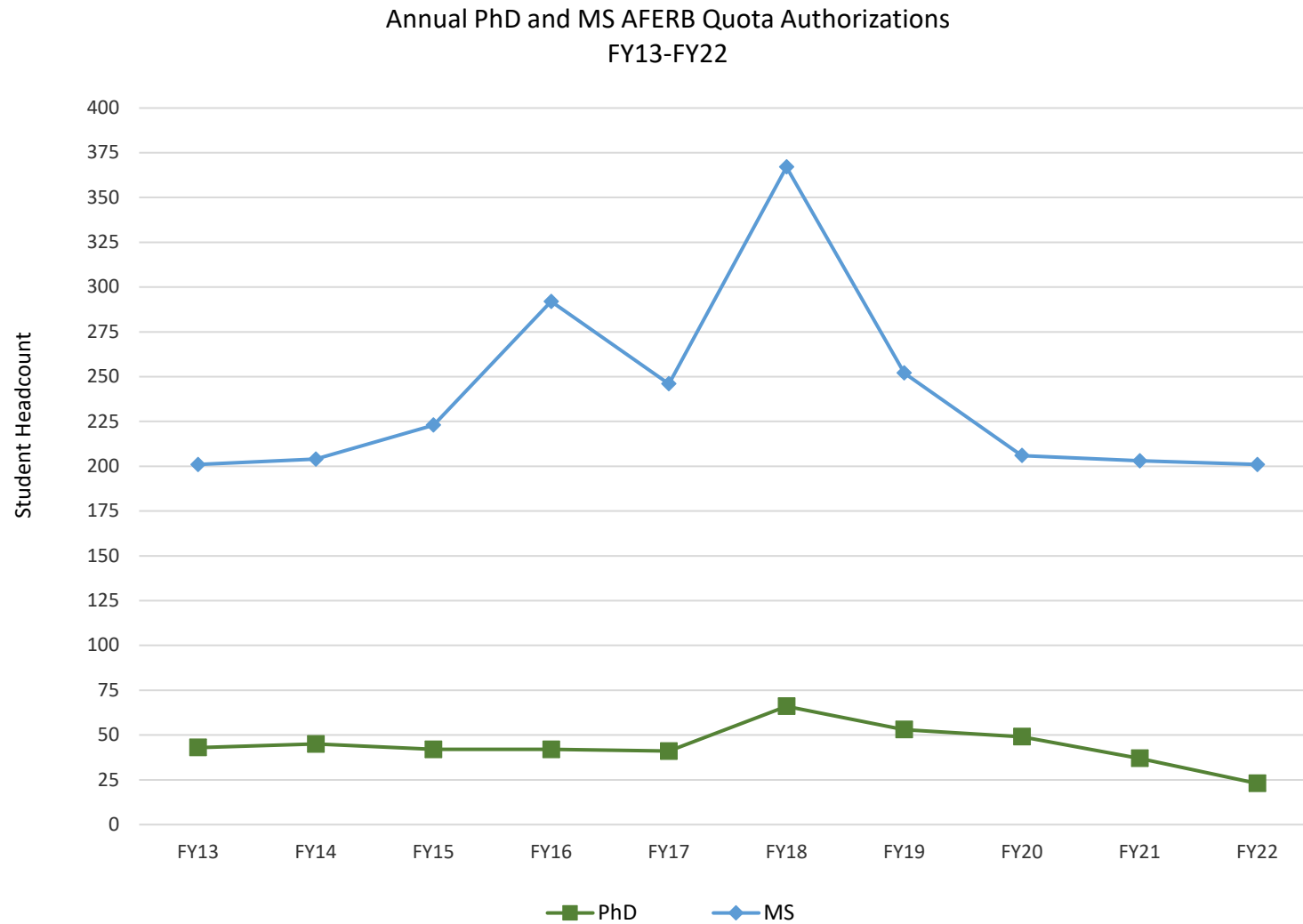
Production - PhD

Year (FY)	Authorized	Enrolled	# of Degrees Awarded	# of Civ	# of Officer	# of Enlisted
FY22	23	133	39	9	30	0
FY21	37	150	43	11	32	0
FY20	49	141	23	9	14	0
FY19	53	134	31	4	27	0
FY18	66	129	38	11	27	0
FY17	41	152	40	7	33	0
FY16	42	152	40	13	27	0
FY15	42	166	41	9	32	0
FY14	45	166	45	9	35	1
FY13	43	145	30	12	18	0



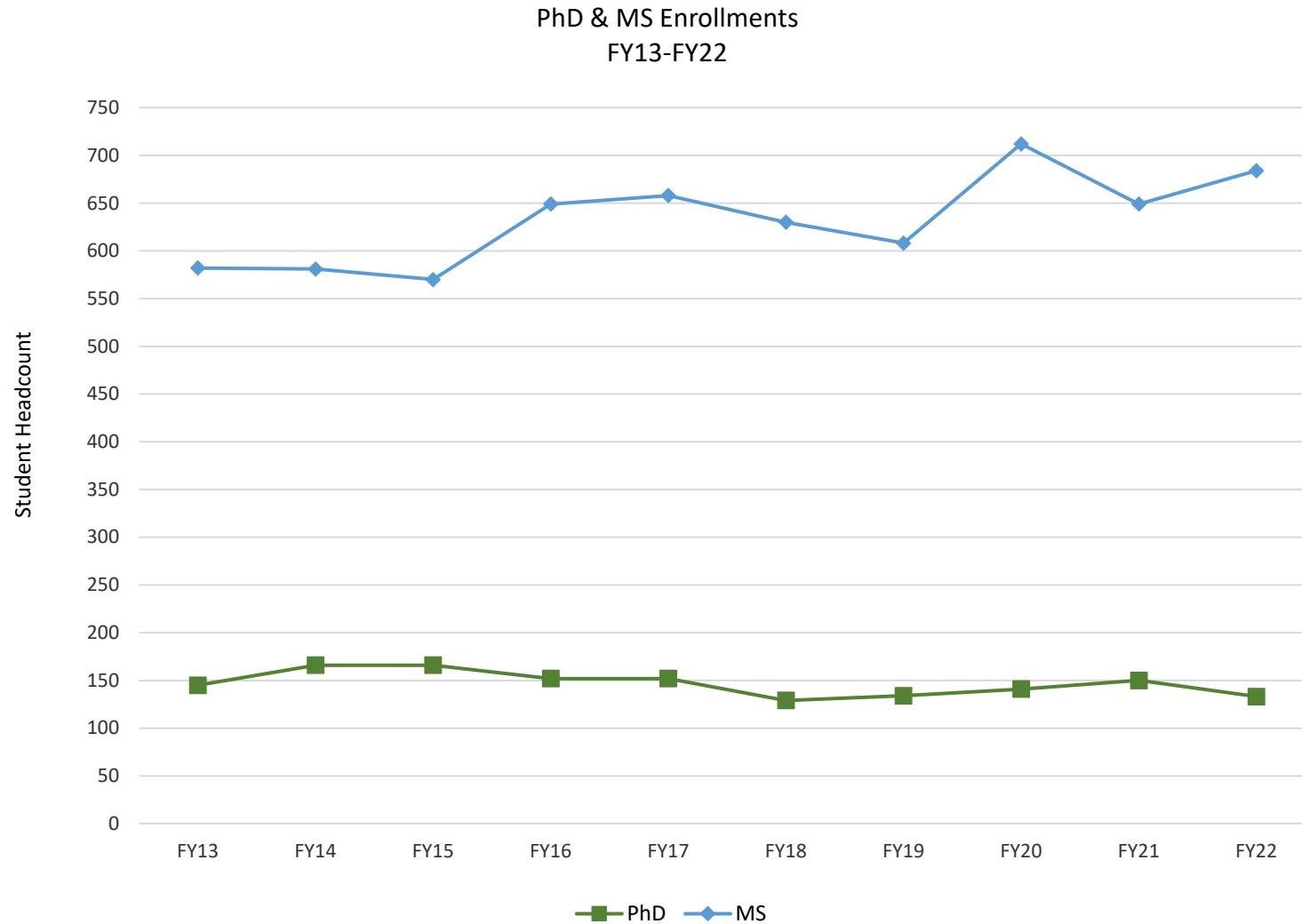


Graduate School (AFIT/EN) AFERB Quota Authorizations FY13-22



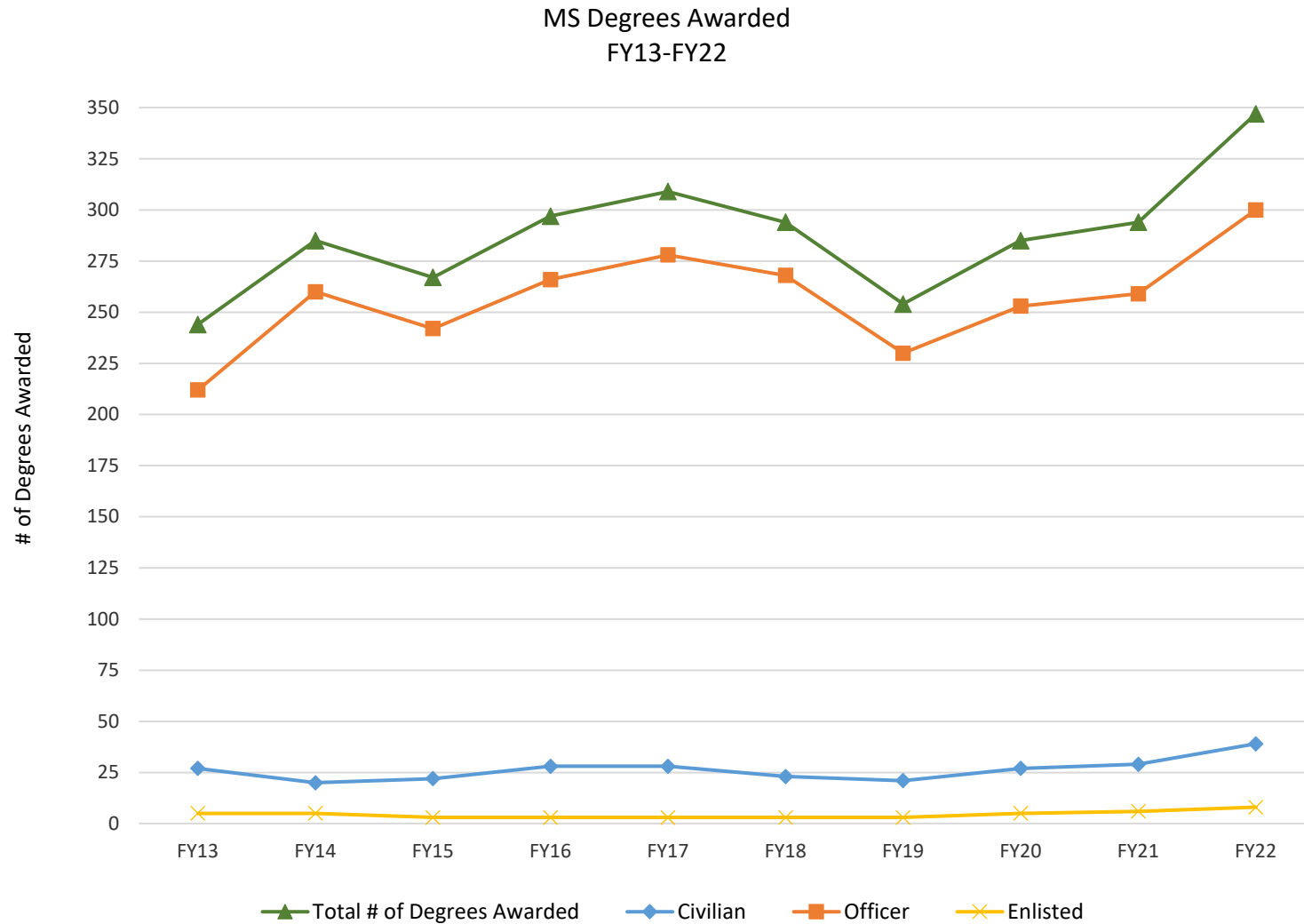


Graduate School (AFIT/EN) MS & PhD Enrollments FY13-22





Graduate School (AFIT/EN) MS Degrees Awarded FY13-22





Graduate School (AFIT/EN) PhD Degrees Awarded FY13-22

